

- TREE SYMBOLS  
X = DIAMETER IN INCHES
- (X) PINE
  - (X) HARDWOOD
  - (X) DOGWOOD
  - (X) MAPLE

**Drainage Note:**  
The owner of record, on behalf of himself releases City of Alpharetta from any and all erosion from storm drains or from flooding drainage features. A drainage easement is providing for the emergency protection of watercourses as established by these regulations. The Director may conduct emergency maintenance in emergency conditions exist. Emergency maintenance, including debris, excavation, filling and the like need judgment of said Director is potentially in system. Such emergency maintenance, construed as constituting a continuing maintenance of City of Alpharetta nor an abrogation of City of Alpharetta's expenses from the owner's of the property.

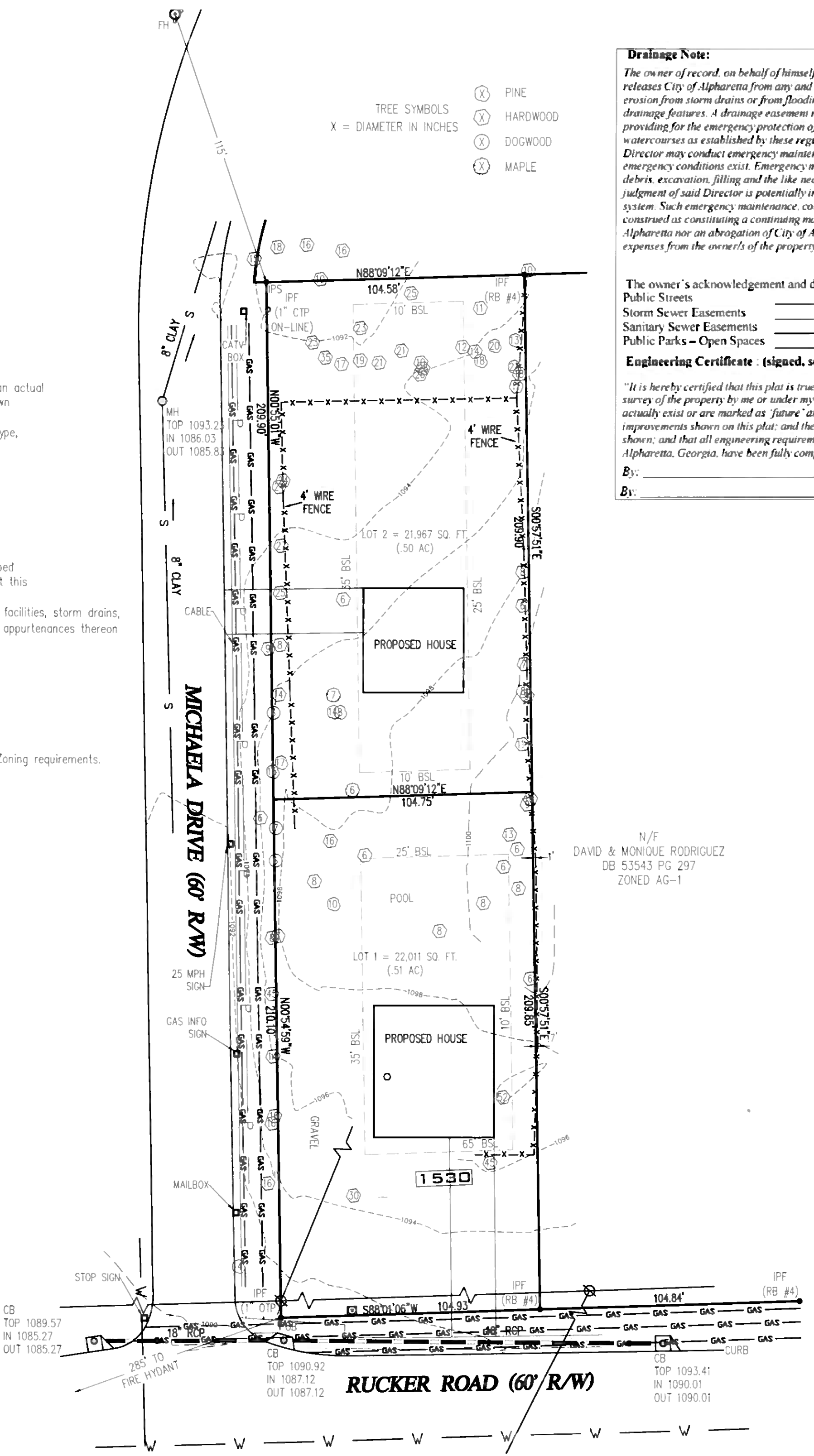
- The owner's acknowledgement and dedication of Public Streets \_\_\_\_\_
- Storm Sewer Easements \_\_\_\_\_
- Sanitary Sewer Easements \_\_\_\_\_
- Public Parks - Open Spaces \_\_\_\_\_

**Engineering Certificate:** (signed, sealed and dated)  
"It is hereby certified that this plat is true and correct, that all structures, improvements, and other features shown on this plat actually exist or are marked as 'future' and that all engineering requirements of the City of Alpharetta, Georgia, have been fully complied with."  
By: \_\_\_\_\_  
By: \_\_\_\_\_

derived from an actual survey of the lots shown. The size, type, and location of all structures, improvements, and other features shown on this plat are as they actually exist or are marked as 'future'.

The undersigned hereby certifies that this plat is true and correct, that all structures, improvements, and other features shown on this plat actually exist or are marked as 'future' and that all engineering requirements of the City of Alpharetta, Georgia, have been fully complied with.

Georgia, Alpharetta Zoning requirements.



N/F  
DAVID & MONIQUE RODRIGUEZ  
DB 53543 PG 297  
ZONED AG-1

CB  
TOP 1089.57  
IN 1085.27  
OUT 1085.27

CB  
TOP 1090.92  
IN 1087.12  
OUT 1087.12

CB  
TOP 1093.41  
IN 1090.01  
OUT 1090.01

**RUCKER ROAD (60' R/W)**